



DECEMBER/JANUARY 2017/18

## EDITOR'S NOTES

Welcome to the last issue for 2017 and the first issue for January 2018. The next Bugle will be published for February next year. It is that time of year when we have to remind all that subscriptions are now due for 2018 and the cost remains at £3 for printed copies and free to all of you who now have electronic copies either by email or from the Bickleigh Website ([www.bickleigh.org.uk](http://www.bickleigh.org.uk)). We would ask all advertisers who kindly support the magazine to let us know if you wish to continue and if so let us know of any changes to your wording. The annual costs remain the same as last year - £20 for a full page, £10 for half and £5 for a quarter. Not only does this expose your business to all those receiving paper copies but also those that have e-versions and now on the web. Thanks to those who have already paid and prompt payment helps so we can pay the school for the printing costs, these being our only costs as the rest (delivery, collection and editing) are all done on a voluntary basis. If you can pay your distributor they will pass the money on or drop off to the Old School.

We wish all readers, residents and friends a very Happy time over the Christmas period and may the New Year be kind to us all.

We hope to see many of you at the traditional Christmas Eve Candlelight Service in the Church, starting at 6.30pm on the 24th of December. More details inside the Bugle.

The Editors:

**Tim Scott**  
Calendar Cottage

**Steve Batt**  
The Old School



*Will there be a white Christmas this year? Photograph from 1982 when the severe weather stopped the milk tankers from getting around the lanes. Milk being off-loaded by land-rover by the Fisherman's Cott (sent in by Farmer John).*

# CHRISTMAS

## A POEM BY PHYLLIS NICHOLS

---

**C**hristmas is here at last  
**H**appy are the children today  
**R**ushing around having fun  
**I**n the garden while it is fine  
**S**tockings are full of presents  
**T**eatime we look forward to Mum's cake  
**M**um and Dad will then have a rest  
**A**nd leave everything until the morning  
**S**o happy that we all enjoyed the day

## CAROLLINGS

---

Years ago carolling was a part of the Christmas tradition. Villages would not only sing but often take their musical instruments with them. Bickleigh hopefully will continue this (minus the instruments) for many years to come. But even Bickleigh could not match some of the old village carolling when folk used to walk to a central venue, partake of warming victuals and then set out by foot around the parish, often not returning until early morning. Perhaps something Bickleigh would like to consider revisiting?

Thomas Hardy eloquently writes about the atmosphere in '**Under the Greenwood Tree**':

*The cider mug was emptied for the ninth time, the music books were arranged, and the pieces finally decided upon. The boys in the meantime put the old horn-lanterns in order, cut candles into short lengths to fit the lanterns. Just before the clock struck twelve (midnight) they lighted the lanterns and started. The moon, in her third quarter, had risen since the snow storm; but the dense accumulation of snow-cloud weakened her power to a faint twilight....most of the outlying homesteads and hamlets had been visited by about two o'clock in the morning. On the way they discussed the relative merits of the musical instruments they were carrying: for example one hard winter on a hard and frosty night "the keys of all of the clar'nets froze...so 'twas like drawing a cork every time a key was opened and an icicle o' spet hung down from the end of every man's clar'net a span long..."*



Even when they had no response from outlying homes they would always sing and play as they had done for the last 40 years and say in a clear and loud voice "A Merry Christmas to ye!"

The sheer joy of carolling is reflected in this lilting poem by Hardy entitled '**The Rush Bride; An Experience of the Mellstock Quire**':

*"We Christmas-carolled down the Vale, and up the Vale, and round the Vale*

*We played and sang that night as we were yearly wont to do -*

*A carol in a minor key, a carol in the Major D,  
Then at each house: "Good wishes: many Christmas joys to you!"*

**Steve Batt**

Visit our online shop at [www.notrunofthemill.com](http://www.notrunofthemill.com)



# bickleigh mill

Bickleigh Bridge, Bickleigh, Nr Tiverton  
01884 855419 [www.bickleighmill.com](http://www.bickleighmill.com)

OPEN FRIDAY AND SATURDAY EVENINGS AND SEVEN DAYS A WEEK

**SHOP**

## THREE FLOORS OF RETAIL THERAPY

An amazing range from around the world.

Ground floor: Cards & Gifts

First floor: Accessories & Home

Top floor: Kids' Store



**DINE**

## HOMEMADE AND PROUD OF IT

Our bistro is open throughout the day, seven days a week, and for evening meals on Fridays and Saturdays.

For details of our Speciality Nights and all our menus visit our website: [www.bickleighmill.com](http://www.bickleighmill.com)



**RELAX**

## IDYLIC SETTING

With our waterside gardens and al fresco dining you can enjoy the tranquil setting outside or, alternatively, relax in our coffee lounge and admire the beautiful mill workings. Explore our riverside walks, paddocks and ponds, or just relax with friends and family in our grounds.



# CAROLS & MULLED WINE AT BICKLEIGH CASTLE

---

You are invited to

**Carols & Mulled Wine for Christmas**

at Bickleigh Castle

**Weds 20th December 6.30 pm.**

Carols in our Saxon Chapel, followed by Refreshments in our  
Great Hall

\*\*\*\*\*

RSVP to [info@bickleighcastle.com](mailto:info@bickleighcastle.com) or call 01884 855363

*THE CAROLS WILL START PROMPTLY AT 6.30 p.m.*

*THERE WILL A COLLECTION FOR*

*NAYAMBA SCHOOL, ZAMBIA*

*AMPLE FREE PARKING. PLEASE BRING A TORCH, AND A  
BROLLY IF WET!*



## NEW TO THE VILLAGE

---

As a village, we would like to extend a warm welcome to **Jill and Chris Cousins and their boys**, Thomas and Miles, who have moved into Hayridge. They have moved from Pennymoor and the two boys attend Bickleigh on Exe, Primary School.

**Mr. & Mrs. Williams** have moved into The Willows from Southampton, welcome to Bickleigh Village and hope you soon make lots of friends and settle happily into the village.



Lodgehill Hotel,  
Ashley,  
Tiverton.  
EX16 5PA



No Room for friends or relatives? We do!  
We are open to non-residents.  
Cream Teas. Restaurant.

Bar and Beer Garden.

Sunday Lunch for £10.25 for 2 courses.  
We also have a small meeting room and can provide buffets for all occasions.  
JUST CALL: TEL: 01884 251200

## BODY CONTROL PILATES

### BICKLEIGH VILLAGE HALL EVERY FRIDAY AT 9.30AM

These classes are mixed ability for posture and general fitness. The classes are suitable for all ages and given by a fully qualified village tutor with 15 years of experience. One ON One is also available.

Contact Angela Mead on 07811855182 or email [angela.mead@gmail.com](mailto:angela.mead@gmail.com) for further information.

### Bickleigh Village Hall

Available to hire for private  
functions

Village Hall Rates: £8 per hour  
(inc Light & Heat)

• Robin Maynard, 01884 855597



### WEST COUNTRY WEDDING FLOWERS

Mrs Polly Thompson

Individually Designed Wedding Bouquets, Head-dresses, Buttonholes and Sprays to suit all budgets.

Flowers for Church and/or Reception if required.  
Also

Private or Corporate Functions

*To make an appointment for me to visit you at your home, daytime, evenings or weekends, please contact:*

Tel: (01884) 855309

[www.westcountryweddingflowers.co.uk](http://www.westcountryweddingflowers.co.uk)



# BICKLEIGH GARDENING CLUB

---

On Monday evening 13th November, the Club held its' Annual General Meeting in the Village Hall. In the absence of the Chairman (being indisposed) the Treasurer welcomed members and read out John's report. The Secretary and Treasurer's reports followed. Officers were re elected and the Committee re elected on block with the exception of Colin Davies who had resigned due to health problems. Members were reminded about the Lunch at Bickleigh Mill on **Wednesday 10th January, 2018** and the date of the next evening meeting **Monday 12th March 2018**. They were also reminded about the New Bickleigh Village Web site.

There being no further business the Meeting was closed and furniture rearranged for the arrival of the Tiverton Ladies Choir. They gave us a night to

remember! (Much feet tapping and singing from the audience!) I've had several telephone calls saying how much members enjoyed their programme and how good it was to see a choir of happy faces – obviously enjoying performing! During the interval members and choir all enjoyed a remarkable selection of finger buffet food. Thank you to all who brought food and thank you to the ladies on tea duty who provided drinks and left a sparkling clean kitchen! After the interval the choir returned to the stage with more songs from the shows and just to remind us of the coming event....ended with three Christmas Songs. After Wendy Baker had thanked the choir for their entertainment, the raffle draw was held and the "Flower of the Month" competition result given out.

**A GOOD NIGHT WAS HAD BY ALL!**

## HISTORY OF THE YULE LOG

---

THE YULE LOG Played an important role in the celebrations of the winter solstice and later Christmas, a large oak log was ceremoniously brought into the house and kindled at dusk, using a brand from the previous year's Yule Log. It was deemed essential that the log, once lit, should burn until it was deliberately extinguished. The length of time, varied from region to region, from 12 hours to several days and it was considered ill-omened if the fire burnt itself out. It was never allowed to burn away completely, as some would be needed for the following year.

In England, it was considered unlucky for the Yule log to be bought, and had to be acquired using other means, as long as no money changed hands. Often it was given as a gift by landowners, and sometimes decorated with evergreens. In Cornwall a figure of a man was sometimes chalked on the surface of the log, mock or block. In Provence, where it was called the tréfoire, carols were sung invoking blessings upon the women that they might bear children and upon the crops, herds and flocks that they might also increase.

The ashes from the Yule log were often used to make protective, healing or fertilising charms, or scattered over the fields. In Brittany, the ashes were thrown



into wells to purify the water, and in Italy as charms against hailstones.

In some parts of the Scottish Highlands, a variation of the Yule log was observed, here a figure of an old woman, the Cailleach Nollaich, was carved from a withered tree stump. At dusk, the figure was brought into the house and laid upon the burning peat of the house fire. The family would gather round the hearth and watch the figure consumed into ashes, the rest of the evening was spent in games and merriment. The figure, represented, not fertility and life but of the evils of winter and death, the figure had to be totally consumed if misfortune and death were to be averted in the coming year.

## **PYONEER BOWEN TREATMENT**

Bowen is a remedial therapy that consists of a series of moves across muscles, tendons and other soft tissue. The therapist uses fingers and thumbs with no harsh manipulation to relieve tension and realign the body.

Two local, qualified therapists are able to offer treatment. Please contact either **Anna Hodgson on 07971395088** or **Pippa Perry on 07794467071** for more information. Alternatively visit the website at [www.pippaperrybowen.com](http://www.pippaperrybowen.com)

## **Yearlstone in 2017**

Open by appointment for 2017 due to exciting building works onsite please call 01884 855700 [info@yearlstone.co.uk](mailto:info@yearlstone.co.uk) for more details.

10% discounts for cases for village residents only....

What they are saying about your village wines lately...

**London International Wine and Spirits Competition Medallist**

“ Very pale lemon with green lights, greenfruited ( apples, pears, greengages) lively on the palate, quite delicate, young but with enough hidden flavours to augur well for next 18 months” ( Number 5 dry white)

**Lyons International Medallist**

“Pale gold, gentle yeastiness, hints of apple and pear, fresh acidity & a creamy texture. “( sparkling Vintage Brut white ).

Paris La Revue du Vin“ A beautiful example of English fizz  
“ ( sparkling Vintage Brut pink Pinot Noir).

Roger & Juliet



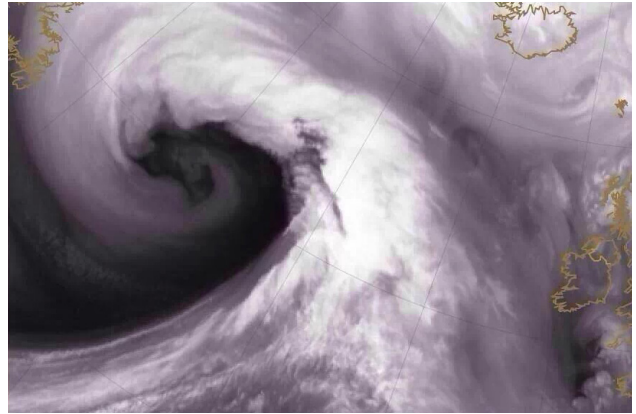
# BICKLEIGH WEATHER WATCH

---

We are all used to the winter storms that bring gales and intense rainfall to Britain each year. These storms damage our homes, flood our rivers and towns and unfortunately sometimes even take lives. Then just days later, the fickle British weather can flip into quiescent, clear skies with no rainfall, little wind and lots of sunshine. In this short article we'll see where our weather systems come from, why they exist at all and what they mean for the weather we experience here in Bickleigh.

In terms of weather, we're in a very interesting part of the world. In the UK we have persistent winds from the west. These winds become stronger with altitude and often exceed 100mph at the height we take a commercial air flight. This is the jet stream, in winter it brings us warm air from over the Atlantic Ocean and guards us from the bitter cold of continental Europe. In summer, it brings us cool moist air from the Atlantic and guards us from the blistering heat of central Europe. However, the jet stream is unstable; it wriggles and writhes as waves ripple along it and it's these waves that grow into our familiar weather systems. A small deviation in the jet stream on the other side of the Atlantic can grow into a full blown cyclonic storm in just a few days by the time it hits us.

Cyclones have deep low pressure at their centre. These are the pressure lows you see on the TV weather forecast and the winds blowing around them always rotate anticlockwise. This means that as the storm approaches, the winds come from the south and bring warm air, then as the storm passes out over the North Sea towards Scandinavia, we get cold winds from the North. Overall, cyclonic storms contain ascending air and lots of insulating



*Image: Satellite image of deep 'Hercules Storm' low pressure system during storm winter of 2013/14.*

cloud so they bring mild weather in winter and cool weather in summer. In complete contrast, there are also weather systems that rotate clockwise, these are the anticyclones and they have high pressure at their centre. It's these weather systems that bring clear skies and hot dry days in summer but freezing conditions in winter. Of course if they bring cold in winter and hot in summer then there must be a date in between when they don't affect the temperature at all, and indeed there is – around the equinoxes in October and March.

Next time you stir a cup of black tea, pause for a moment and notice how the tea leaves collect in the middle of the bottom of your cup. The balance of forces and the resulting flow pushes the liquid and the tea leaves to the middle, then up to the top of your cup and outwards before descending down the sides. This is just like a cyclonic storm with its swirling and rising motion and resulting clouds and rain.

***Resident Scientist***



## NJ SERVICES

**Handy man for hire  
Painting, Building maintenance,  
Gardening, General DIY.**

**£15 Per Hour.  
Tel: 07940762411  
Email: northernjohn@yahoo.com**

### Tiverton Plumbing and Heating Ltd



[www.tivertonplumbingandheating.co.uk](http://www.tivertonplumbingandheating.co.uk)

Email: [info@tivertonplumbingandheating.co.uk](mailto:info@tivertonplumbingandheating.co.uk)

Tel: 01884 855018 or Mobile 07860 504222



- Oil or Gas boiler replacements & Servicing
  - Boiler breakdowns
  - General plumbing
- Full central heating system installations & Upgrades

### KERRY PETERS

**1 to 1 Swimming Lessons for ages 5 years+**

Water Confidence/Learn to Swim,

Stroke Improvement

Swim Technique for Triathletes

Adult with Child Lessons

ASA Level 1 and 2 Qualified

DBS Checked, Fully insured

**Call me** on 01884 855856

or Text 07968 889673

Historic building conservation  
Lime mortars

ORCHARD  
  
stonemasons

Carving  
Worked stone  
Walling  
Stone cleaning  
Consultancy

01884 855617

[www.orchardstonemasons.co.uk](http://www.orchardstonemasons.co.uk)

Stone Robots Silverton Devon EX5 4BU



**ST MARY'S BICKLEIGH**

**COMMUNITY  
SERVICE HOLY COMMUNION  
ON CHRISTMAS DAY  
25 DECEMBER AT 10 AM  
ALL VERY WELCOME  
PLEASE JOIN US**

**ST MARY'S BICKLEIGH**

# ***SOUP N' PUD LUNCHEES*** **EVERY THIRD TUESDAY**

**IN THE VILLAGE  
HALL**

**FROM 12 MIDDAY TO  
1PM**

**BOWS OF SOUP, AND  
PUDDINGS FOR £4.50  
P.P.**

**COME AND SUPPORT  
THE SHELTER BOX  
APPEAL**



**ENJOY SOME  
REAL HOME  
COOKING WITH  
GOOD COMPANY  
AND HELP TO  
RAISE FUNDS FOR  
SHELTER BOX IN  
2016**

# BICKLEIGH DRAMA GROUP

---

Bickleigh Drama Group have just completed a short run of a full length Comedy, and raised a substantial amount for the Devon Air Ambulance Trust. Bickleigh Village Hall was bursting at the seams on the evenings of Sat 28th and Sun 29th October when, following an excellent meal of either Thai food, or Ceylon Curry, a comedy play entitled "The Finish line" was performed by a cast of 12.

The tale is set in August 2012 when London was hosting the Summer Olympic Games and Team GB were doing us proud by winning a total of 65 medals. At the same time, in a remote decaying Country House, known as Woodley Manor, a dozen wonderfully varied and equally colourful characters unite, hoping in their separate ways to reach "The Finish Line". Strangely they do end up "medalling" but in a completely different way!

Maisie, the long-suffering, quick-witted maid (played delightfully by Becca Radford) manages the house, while brother and sister, Sir Humphrey and Lady Gwendoline Woodley (Dave Fuller and Rose Chanin) are eccentric but lovable oddities who live in the past, with the house falling down around their ears. Sustenance of sorts is offered by the long suffering cook (Jackie Mitchell), a down to earth no nonsense chef who likes a tincture or three! Into the melee enters the estranged younger sister of Sir Humphrey and Lady Gwendoline, the Lady Hester (Helen May) who has fallen on hard times. She brings her accomplice Sebastian (Richard Chanin) and the couple make a magnificent comedic partnership.

Also invited to this weekend are three ex-Olympians. The first is Titania (Laura Chanin) a leggy Russian femme fatale, alluring, platinum blonde with men clearly on the menu and with an insatiable appetite. Then there is Hans (Paul Little), a German former athlete who now believes he is on the run from the law. Thirdly we meet Alexis (Vikram Devaraj). She is an ex-Olympic Russian shot-putter who is now a prison officer and close friend of Hans. She admits to taking performance-enhancing drugs in the past but is morally upright and candid although there is nothing delicate about Alexis!

Freddie Fingers (Richard Somerwill) is a wonderful cockney wide-boy who is no stranger to being a



guest at HMP establishments. He and Maisie have a fondness for each other and, although roguish and light-fingered, like Del Trotter he has a kind heart and recognizes an honour among thieves. Freddie has adopted a step-daughter, Brittany (Lily May), an easy going playful teenager who feels a kinship with Sir Humphrey despite being worlds apart in refinement and the social classes.

Finally we meet Mcreebie (Neil Powell), a council Sanitary Inspector. This well intentioned individual who makes a visit to Woodley Manor is totally bemused as he meets a succession of characters who leave him increasingly bewildered, baffled and perplexed. After being locked in the cellar he escapes, ever puzzled and confused by the chaotic proceedings and still mystified by the workings of the cesspit! Happily the story ends with disclosure of skeletons in the cupboard, and the discovery of a valuable item within the grounds, ensuring that the family's future and fortunes are restored and secure.

The play was written by Paul Rudelhoff and Jane Hilliard, published by Lazy Bee Scripts, and produced by Rose Chanin. The lighting, sound and effects were carefully designed and executed by Adam Jones. The two evenings raised a total in excess of £1,400 for the Devon Air Ambulance Trust and we would like you to express our gratitude to those who managed to get to the hall to support this activity and are amazed at everyone's constant generosity.

**Rose Chanin 07856 057 006**

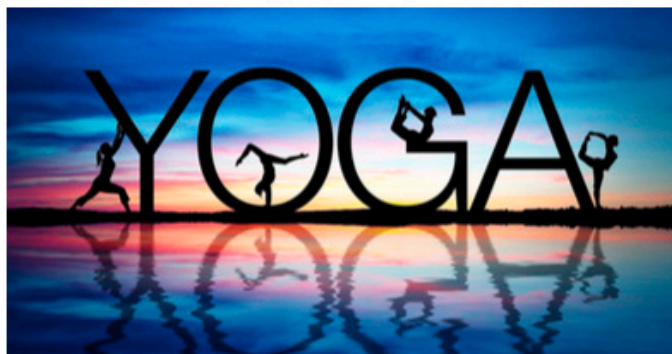
# YOGA

Bickleigh Village Hall Thursdays 7.00-8.30

Classes also in Calverleigh, Bishops Nympton, Bampton, Butterleigh

Pat 01884 253 229 pat\_bell@hotmail.co.uk

[www.yogability.co.uk](http://www.yogability.co.uk)



## The Nail Box

Gel nails, spa manicures and pedicures

### Michelle Dennis

Bio Sculpture Nail Technician, based from home

Lilac Cottage, Bickleigh, Tiverton, EX16 8RH

Tel: 07956314237

Email: michelledennis79@gmail.com

Please contact me for an appointment or to discuss your requirements



ALL ASPECTS OF CARPENTRY UNDERTAKEN  
PROFESSIONAL FRIENDLY SERVICE  
FULLY QUALIFIED & INSURED  
CSCS ACCREDITED

S.L. CHANIN & CO.  
CARPENTRY

City & Guilds  
Qualified

[www.slchanincarpentry.co.uk](http://www.slchanincarpentry.co.uk)

Tel: 01884 855 494 | Mob: 07708975156

Email: [stuart@slchanincarpentry.co.uk](mailto:stuart@slchanincarpentry.co.uk)

Lee Cross, Thorverton, Exeter, Devon, EX5 5LN

## IS YOUR DOG MICROCHIPPED?



TAKE THE STRESS OUT OF VISITING THE VETS FOR YOUR DOG TO BE CHIPPED WHILE AT YOUR HOME. AT £10 PER DOG, IT GIVES YOU PEACE OF MIND FOR LITTLE MONEY. CONTACT DAWN ON 01363 866319 OR 07976175943

## LOGS FOR SALE



£75 FOR A LOAD  
ALSO CAN SUPPLY BAGS OF KINDLING £3 PER NET  
CONTACT ROBERT OR DAWN ON 01363 866319

# ST MARY'S PEWS NEWS

DECEMBER

---

**The season of Advent 2017** – the meaning of Advent is “arrival”. For the Christian this season of four weeks starting on the 3rd of December is a time of personal reflection as we anticipate celebrating the birth of Jesus of Nazareth, some two thousand years ago, at Christmas. A practical demonstration of the season is the Advent Wreath within which we place five candles. One each for the four Sundays of Advent and the fifth lit on Christmas Day. It is also a time of marking the New Year for the worldwide Christian church. We move for example from reading Matthew’s Gospel to that of Mark.

**Christmastide – Christmas Eve** – The traditional candle lit service of Carols and Readings starts at 6.30 pm. **Christmas Day** – Please note this year Christmas Day falls on a Monday and in a change from past years we are starting the service at 10 am.

**Lest we forget?** - On Friday 10th November 2017 a platoon (Class 5 Bickleigh School) formed up in three ranks in Joan’s Orchard facing the Union Flag flying from St Mary’s church tower. Supernumeraries were present and Class Teacher Louie Kerlogue. There followed a short service, reading the Roll of Honour, the Exhortation followed by the Kohima Epitaph and singing of the National Anthem. Class 5 and others present then marched in file to the Village Hall for refreshments and talks on their own understanding

**Revd Thom Thompson**

(01884 855309) or [tmdfthompson@uwclub.net](mailto:tmdfthompson@uwclub.net)

of family contributions to the various wars and conflicts since the Great War of 1914-18. There were displays of campaign medals, miniatures (one VC) and ribbons including one MBE and three Mentions in Dispatches (MIDs). Once again the youth of our community demonstrated a truth acknowledged by the Bible for “out of the mouths of babes and infants you have found a bulwark because of your foes to silence the enemy and avenger” (Psalm 8 verse 2).

Our own Remembrance Day service on the 12th November continued with a form of service that has been authorised by the “Churches Together in Britain and Ireland”. This provides a meaningful service involving all age groups that recognizes past sacrifice and looks for peaceful means to overcome the threat of war fighting in the present. Next year the Sunday service falls on the 11th November, a truly memorable date one hundred years to the minute since the fighting of the Great War came to a stop.

**Soup and Pudding** – Apologies for advertising the wrong date for the November lunch. The Christmas luncheon in December takes place on **Tuesday 19th starting at midday**. Festive cheer will be provided!

**The Gospel According to St John (Chapter 12 onwards)** – The topic for study and discussion as the House Group continues to meet at **7.30 pm on Thursday evenings** at Gable Cottage.



*Left: Mr. Chris Taylor is explaining the medals of his father to Class 5 children. Right: Class 5 Remembrance service in Joan's orchard (Steve Batt).*



Tel : 01884 855596

Email : [contact@thetroutinnbickleigh.co.uk](mailto:contact@thetroutinnbickleigh.co.uk)

BGB

Real Ales

Fine Wines

Excellent Food

Exeter Road  
Bickleigh  
Tiverton  
Devon  
EX16 8RJ

## Dealing with The Black Stuff...



Robin Maynard of Bickleigh

### **THE EXE VALLEY CHIMNEY SWEEP**

Fully insured for professional sweeping  
of solid fuel appliances and open fires.  
Certificate issued for insurance purposes.  
CCTV surveys if required.

*It is against company policy to employ small children*

**Tel: 01884 855597 or Mobile: 07980 146076**  
email: [exevalleychimneysweep@btinternet.com](mailto:exevalleychimneysweep@btinternet.com)

# December 2017

Sunday	Monday	Tuesday	Wednesday	Thursday	Friday	Saturday
					<b>1</b>	<b>2</b>
<b>3</b> <b>Advent 1</b> 8 am Communion St Mary's	<b>4</b>	<b>5</b>	<b>6</b>	<b>7</b>	<b>8</b>	<b>9</b>
<b>10</b> <b>Advent 2</b> 6 pm Evensong St Mary's	<b>11</b> <b>Bickleigh School</b> <b>Christingle</b> 2:30 pm St Mary's	<b>12</b>	<b>13</b>	<b>14</b> <b>Fireworks!</b> Bickleigh Castle (warning for pets)	<b>15</b> <b>Bickleigh School End of Term Service</b> 2:30 pm St Mary's	<b>16</b> <b>Fireworks!</b> Bickleigh Castle (warning for pets)
<b>17</b> <b>Advent 3</b> 11 am Family Service w/ Holy Baptism St Mary's	<b>18</b>	<b>19</b> <b>Soup n Pud</b> Midday Village Hall	<b>20</b> <b>Carols and Mulled Wine</b> 6:30 pm Bickleigh Castle	<b>21</b>	<b>22</b>	<b>23</b>
<b>24</b> <b>Advent 4</b> 6:30 pm Candlelit Carol service St Mary's	<b>25</b> <b>Christmas Day</b> 10 am Holy Communion St Mary's	<b>26</b>	<b>27</b>	<b>28</b>	<b>29</b>	<b>30</b>
<b>31</b> <b>First of Christmas</b> 11 am Matins with Carols St Mary's	<p>YOU HAVE AN EVENT YOU WANT EVERYONE TO KNOW                      ABOUT JUST SEND US AN EMAIL AND WE WILL SHOUT ABOUT IT                      FOR YOU!</p> <p><b><i>bickleighbugle@outlook.com</i></b></p>					